



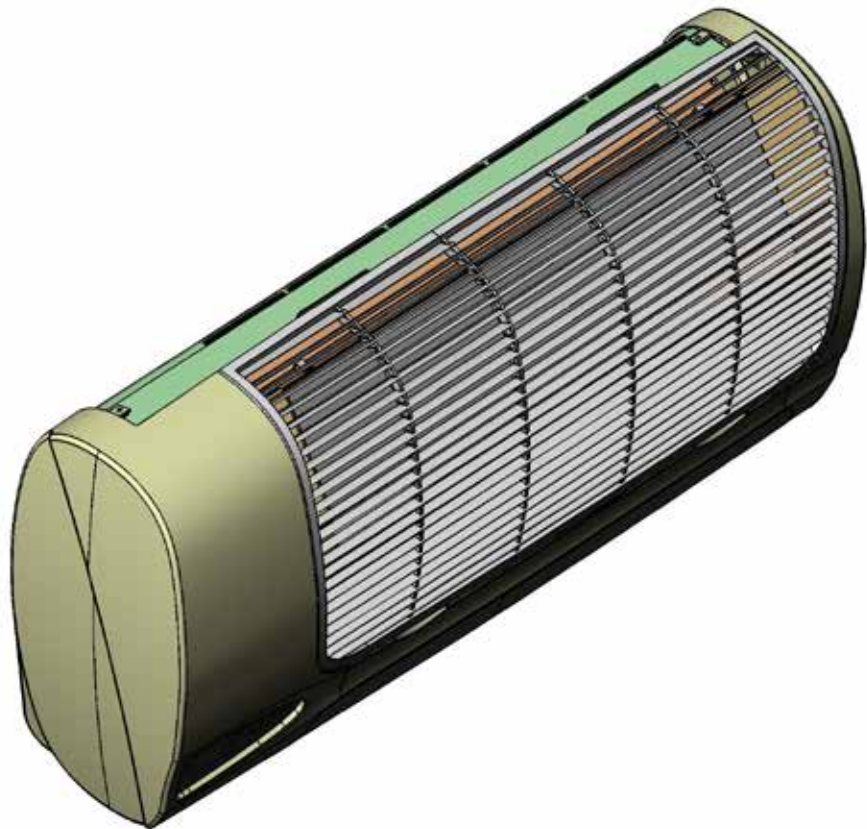
# WLHV

## High Wall Variable Speed Air Handler

### Parts Manual

#### **MODELS:**

- WLHV 09
- WLHV 12
- WLHV 18
- WLHV 24
- WLHV 30
- WLHV 36



An ISO 9001-2008 Certified Company

**ECR International, Inc.**

2201 Dwyer Avenue,

Utica NY 13501

web site: [www.ecrinternational.com](http://www.ecrinternational.com)

P/N# 240009661, Rev A [12/01/2013]



# Table of Contents

## E-verter High Wall Variable Speed Air Handler

Decoding .....	3
Cabinet Assembly [9-36].....	4
Control Assembly [09-36] .....	5
Scroll Assembly [9-36] .....	6
Scroll Assembly [09-36].....	7
Board Layouts [09-36].....	8

Consult manufacture for availability items may be subject to minimum order quantities.

[Limited Warranty](#) applies, 1-year parts and 5-year compressor.

**Information and specifications outlined in this manual in effect at the time of printing of this manual. ECR International reserves the right to discontinue, change specifications or system design at any time without notice and without incurring any obligation, whatsoever.**



# Decoding

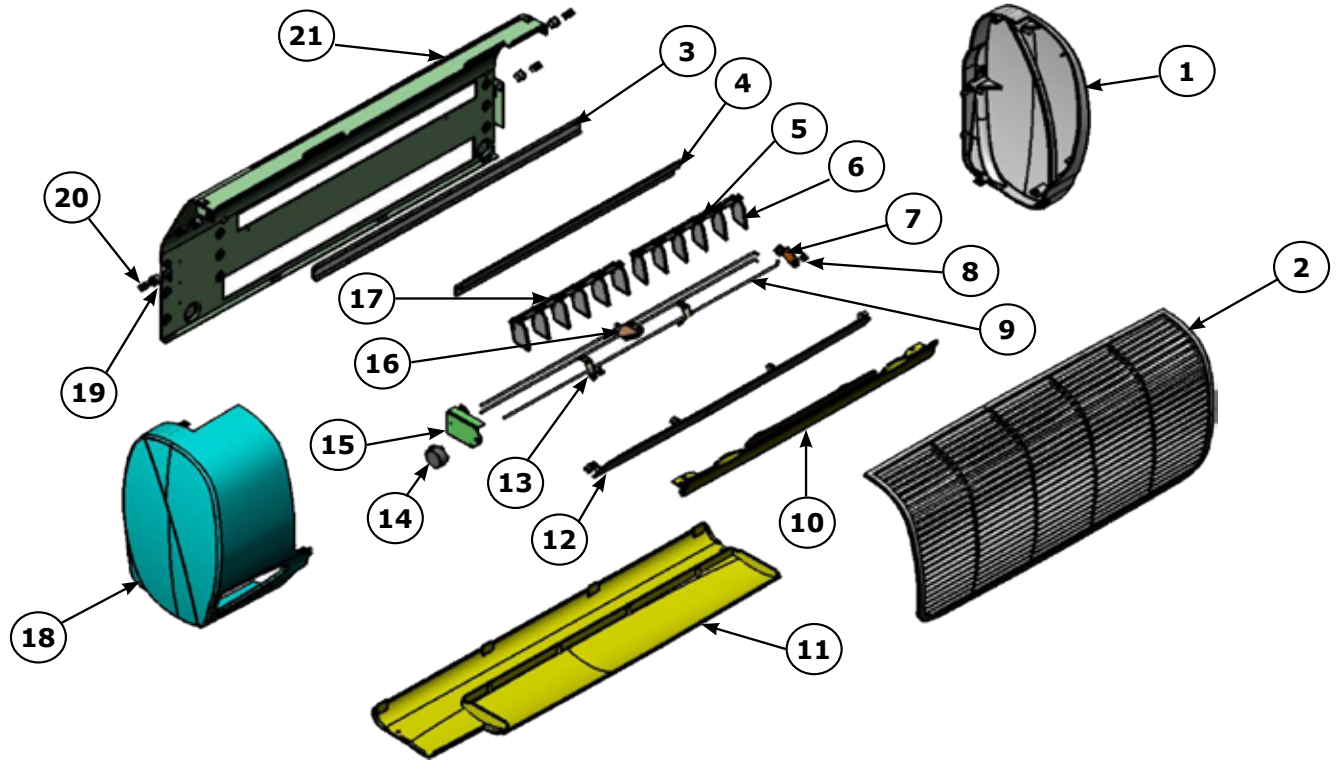
## E-verter High Wall Variable Speed Air Handler

Model			Revision	Capacity	Voltage	Aux Ht
Cabinet Style	Function					
<b>W</b>	<b>L</b>	<b>H</b>	<b>V</b>			
Wall - WL						
H - Heat Pump or Straight Cool (09-36)						
Variable Speed - V						
				9,000 - 09		
				12,000 - 12		
				18,000 - 18		
				24,000 - 24		
				30,000 - 30		
				36,000 - 36		
				A - 115V (09-12 Only)		
				D - 208/230V		
						0 - NONE
						3 - 3 kw@208/230V (09-24 ONLY)
						5 - 5kw@208/230V (18-36 ONLY)



# Cabinet Assembly [9-36]

## E-verter High Wall Variable Speed Air Handler

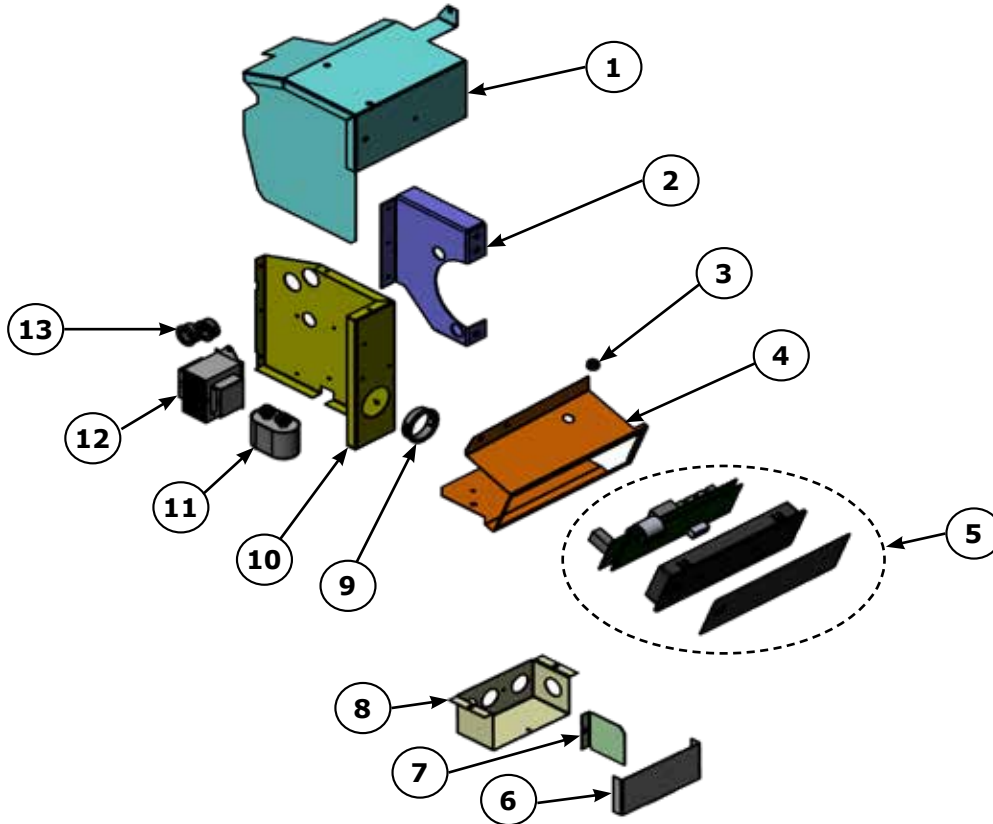


Ref#	Model	Part Number	Description
1	09-36	108000122	COVER, RIGHT END, WLH/C 09-36
2	09-12	108000126	GRILLE, RETURN AIR,WLH-09/12
	18-24	108000076	GRILLE, RETURN AIR,WLH-18-30
3	30-36	108000177	ASSY,GRL,RTN,AIR,WLC,30-36
	09-12	109002497	BRKT,WALL SUPT,ANGLE,WSP/WHP09-12
	18-30	109006366	BRKT,WALL SUPT,ANGL,WLH 18-24
4	36	109001178	BRKT,WALL,HNG,WCX/AEC,24/36,WLC/H 3
	09-12	109000560	BRKT,WALL HNG,WCX/AEC/WSP/WHP 9/12
	18-24	109000650	BRKT,WALL HNG,,WCX/AEC,15/18
5	30-36	109001178	BRKT,WALL,SUPT,WSP/WHP 24/36
	09-12	108000119	VANE,ADJUSTER,WLH 09/12
6	18-24	109000120	ARM,VANE,ADJR,WLH 18-24
	09-12	108000116	RETAINER,VANE,WLH-09/12
	18-24	108000117	RTNR,VANE,WLH 18-24
9	30-36	108000118	RTNR,VANE,WLC 30-36
	09-36	109006348	BKRT,SUPT,LVR,WLC/H 09-36
8	-	240006044	BSHG,7/16" to 5/16",B-437-312
9	09-12	109006422	ROD,FINGER GUARD,WLC/WLH09/12
	18-24	109006423	ROD,FINGER GUARD,WLC/WLH18/24

Ref#	Model	Part Number	Description
10	09-12	108000131	CENTER, WLH-09/12
	18-24	108000132	CTR,WLH18-24
	30-36	108000133	CTR,WLC30-36
11	09-12	108000134	BOTTOM, WLH-09/12
	18-24	108000135	BOTTOM, WLH-18-24
	30-36	108000136	BTM,WLC 30-36
12	09-12	108000123	LOUVER, DISCHARGE,WLH-09/12
	18-24	108000124	LVR,DISCH,WLH18-24
	30-36	108000125	LVR,DISCH,WLC30-36
13	09-36	109006347	BRKT,PIVOT,LVR,WLC/H 09-36
14	-	102000135	MTR,STEPPER,35MM DIA,WLC/H
15	09-36	109006215	BRKT,MTR,LOUVER DRIVE,WLC/H,09-36
16	09-24	109006480	SUPT,FINGER,GUARD,WLH 09-24
17	09-36	108000115	VANE,WLC/H 09-36
18	09-12	108000137E	COVER, CONTROL END,WLC/H 09-36
19	-	240005697	FSNR,TREE-LOK,RECPT
20	-	240005696	FSNR,TREE-LOK,BALL
21	09-12	109006204	PNL,BACK,WLH 09-12
	18-24	109006213	PNL,BACK,WLH 18-24
	30-36	109006230	PNL,BACK,WLC 30-36

# Control Assembly [09-36]

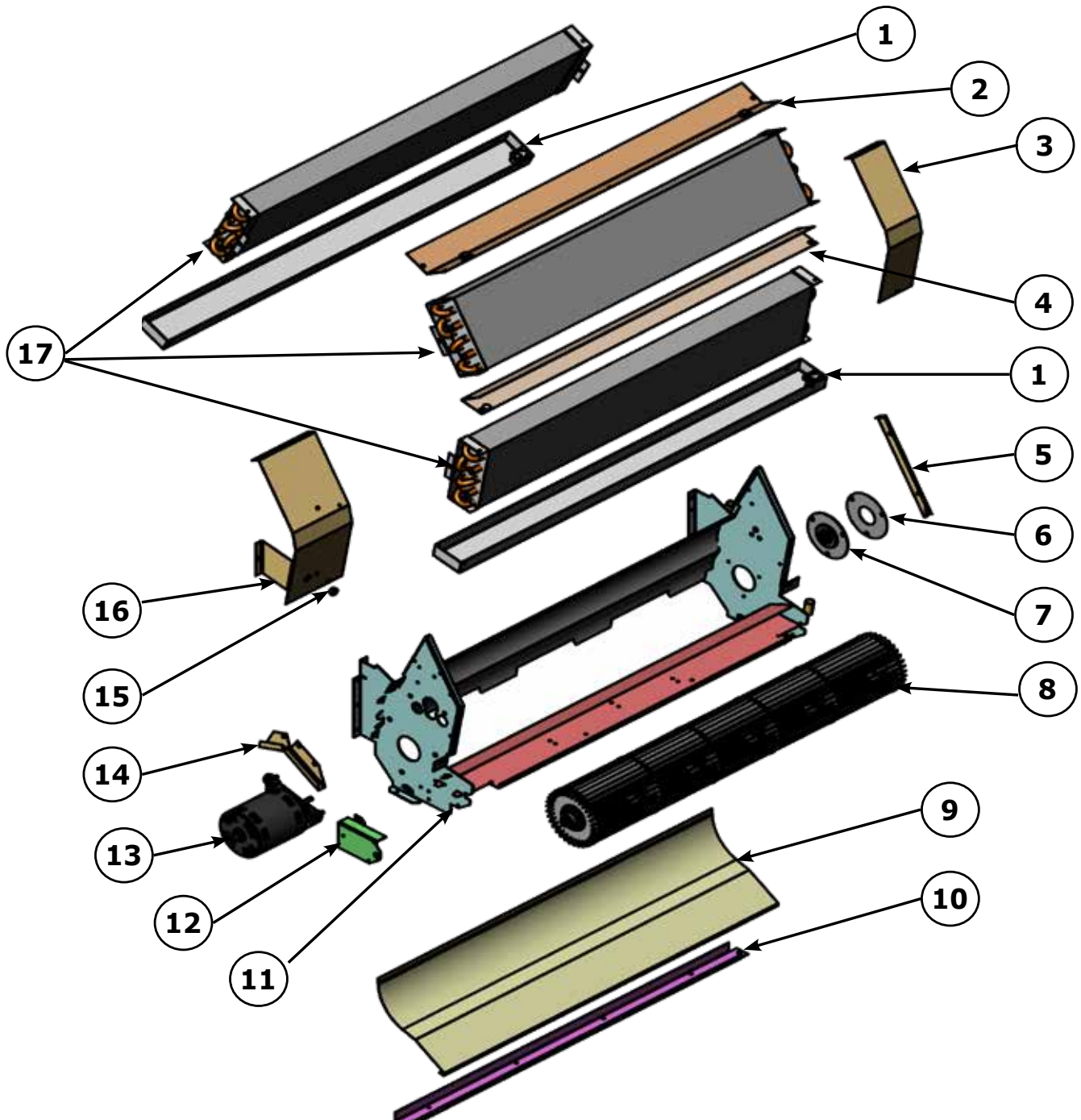
## E-verter High Wall Variable Speed Air Handler



Ref#	Model	Part Number	Description
1	09-24	109006379	ASSY,WLD,CVR,CTRL,WLH09-24
	30-36	109006504	ASSY,WLD,CVR,CTRL,WLC30-36
2	09-24	109006214	SUPT,BLWR MTR,WLH 09-24
	30-36	109006272	BRKT,MTR SUPT,WLC 30-36
3	-	240006044	BSHG,7/16" to 5/16",B-437-312
4	09-36	109006233	BRKT,MTG,CTRL,WLC/H 09-36
5	09	550002613	KIT,CTRL,INVTR,ASSY,WLHV09
	12	550002616	KIT, CTRL,INVTR,ASSY,WLHV12
	18	550002619	KIT, CTRL,INVTR,ASSY,WLHV18
	24	550002622	KIT, CTRL,INVTR,ASSY,WLHV24
	30	550002910	KIT, CTRL,INVTR,ASSY,WLHV30
	36	550002913	KIT, CTRL,INVTR,ASSY,WLHV36
6	09-36	109006236	CVR,LOW VOLT,BOX,WLC/H 09-36
7	09-36	109006235	DVDR,LV,BOX,WLC/H 09-36
8	09-36	109006234	BOX,LV,CONN,WLC/H 09-36
9	-	240000539	BSHG,HEYCO,1-1/2X1-5/16,#1
10	09-36	109006232	BOX,CTRL,WLC/H 09-36
11	-	240002060	FLTR,RC/RH-10,R/A,7-1/4x30x3/8
12	-	240001264	TFMR,208/230V,50/60HZ,24V,40VA
13	-	206000007	BSHG,7/8 TO 5/8,2123

# Scroll Assembly [9-36]

E-verter High Wall Variable Speed Air Handler





# Scroll Assembly [09-36]

## E-verter High Wall Variable Speed Air Handler

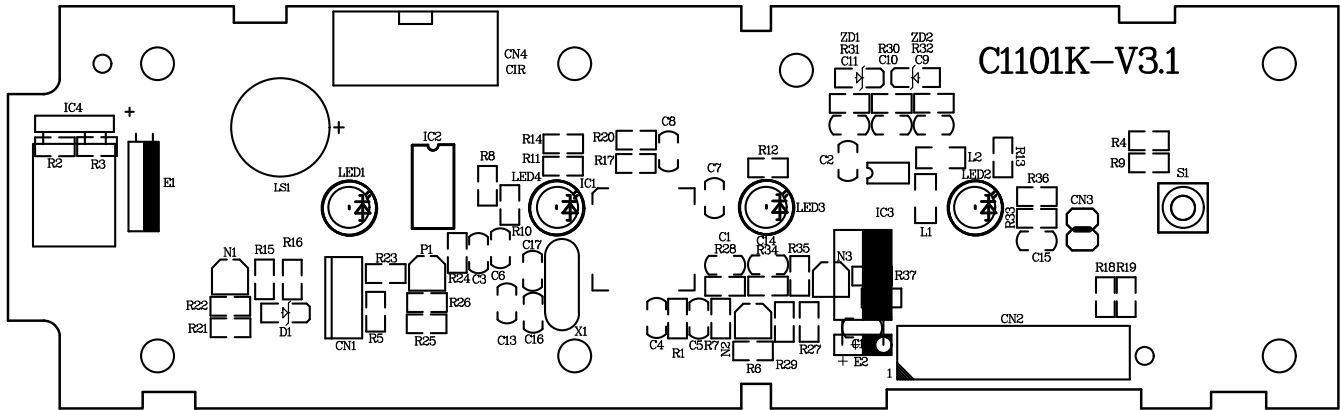
Ref#	Model	Part Number	Description
1	09-12	109006656	ASSY,DRN,PAN,WLH 09-12
	18-24	109006658	ASSY,WLD,DRN PAN,WLH 18-24+
	30-36	550002679	KIT,ASSY,DRN PAN,FWD,W/INS,WLC30-36
		550002658	KIT,ASSY,DRN PAN,REAR,W/INS,WLC30-36
2	09-12	109006202	BLKOFF,COIL,TOP,WLH 12
	18-24	109006211	BLKOFF,COIL,TOP,WLH 18-24
	30-36	109006225	BLKOFF,COIL,TOP,WLC 30-36
3	09-24	240006415	BLKOFF,RT,WLH 09-24
4	09-12	109006203	BLKOFF,COIL,FRNT,WLH 12
	18-24	109006212	BLKOFF,COIL,FRNT,WLH 18-24
	30-36	109006226	BLKOFF,COIL,FRNT,WLC 30-36
5	09-36	109006416	BRKT,COND,RT,WLC/H 09-36
6	09-36	109004326	RTNR,SLV BRG,WHP9-36
7	09-36	240002460	NYLON,SLV & HSG,WLC/H,WSP,WHP 09-36
8	09-12	240002462	BLWT,WHL,SLV BRG,,WSP/WHP09/12
	18-24	240004695	BLWR,WHL,PLASTIC,NO HT,WHP 15/18,SUNWILL
	30-36	240005125	WHL,BLWR,5" x 40" WLC 30-36
9	09-12	109006196	SCROLL,BTM,WLH,09-12
	18-24	109006207	SCROLL,BTM,WLH,24
	30-36	109006220	SCROLL,BTM,WLC,30-36
10	09-12	109006197	RTNR,BTM,SCROLL,WLH,09-12
	18-24	109006208	RTNR,BTM,SCROLL,WLH,24
	30-36	109006221	RTNR,SCROLL,WLC,30-36
11	09-12	109006237	ASSY,SCRL,WLH 09-12
	18-24	109006238	ASSY,SCRL,WLH 24
	30-36	109006239	ASSY,SCRL,WLC 30-36
12	09-36	109006215	BRKT,MTR,LVR DRV,WLC/H,09-36
13	09-12	102000178	MTR,EVAP,208/230V,9-12,3-SPD,Y4S403C05
	18-24	102000181	MTR,EVAP,208/230V,18/24/30,7190-3300
	30-36	102000179	MTR,EVAP,208/230V,36,3-SPD,Y6S620C827
14	09-36	109006417	BRKT,COND,LT,WLH 09-24
15	09-36	240006044	BSHG,7/16" to 5/16",B-437-312
16	09-24	109006414	BLKOFF,LT,WLH 09-24
	30-36	109006502	BLKOFF,LT,WLC,30-36
17	9-12	104000380	COIL,EVAP,WLH 12,3EY1602D-5.00X25.50
	18-24	104000381	COIL,EVAP,WLH 24,3EY1602D-5.00X35.50
	30-36	104000349	COIL,EVAP,WLC30 3EY1602C-6.00x45.50
		104000355	COIL,EVAP,WLC30 3EY1602C-4.00x45.50



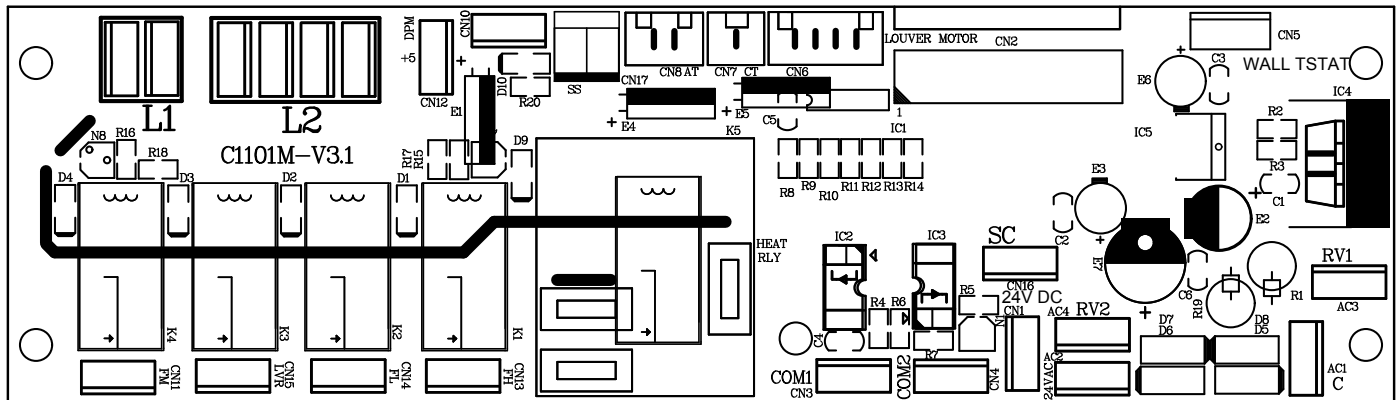
# BOARD LAYOUTS [09-36]

## E-verter Variable Speed Universal Air Handler

### ID UNH/WLH LED BOARD



### ID RELAY BOARD



An ISO 9001-2008 Certified Company

ECR International, Inc.

2201 Dwyer Avenue,

Utica NY 13501

web site: [www.ecrinternational.com](http://www.ecrinternational.com)