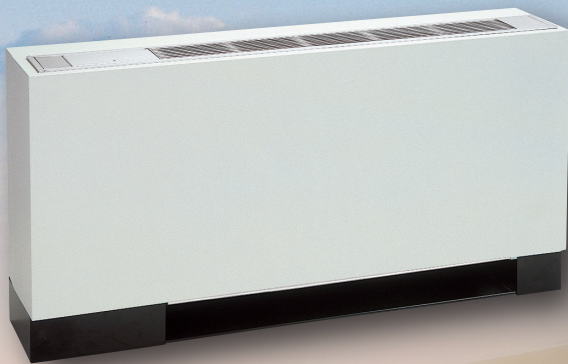


RETROAIRE™

The Right Fit for Comfort

Quality Water Source Console Units for replacement or new construction that maximize comfort with minimal expense

- Hospitality
- Healthcare Facilities
- Apartments
- Dormitories



CMH, CWH, WMH

Water Source Heat Pump Consoles

- Heat Pumps which utilize water, instead of air (PTAC), as the heat transfer medium
- Optional Electric Heat
- Cooling: 10,000 – 12,000 Btuh (2.9 – 3.5 kW)
- Heat Pump: 11,000 - 13,600 Btuh (3.2 - 4.0 kW)

RetroAire's R-410A Water Source Console product line is available for retrofit jobs or new construction and offers an economical means to provide zone cooling and heating. Proudly made in Upstate New York, these units are designed to replace old, less efficient Water Source Console units without any modifications. With many options, excellent performance, and long reliable service, RetroAire Water Source Consoles are "The Right Fit for Comfort".

MANUFACTURER	MODEL	RETROAIRE REPLACEMENT
Climate Control	WM Series	WMH
Climate Master	WC 800 Series 801 Series	CWH CWH CMH
Cold Point Corp.	Adirondack-Aire 801 Adirondack-Aire WM	CMH WMH
Friedrich	WC 800 Series 801 Series	CWH CWH CMH
Islandaire	EZ Series 8S EZ Series WM	CMH WMH
McQuay	WM Series	WMH
Singer	WM Series	WMH

In new construction applications, the CWH are perfect for hotel/motel, extended care and assisted living facilities, apartments and dormitory applications, anywhere there is a condenser water loop.

Versatility

Offered with many factory installed options, RetroAire Water Source Consoles have application flexibility. Configurable features include: optional piping locations, disconnect switches, Master/Slave operation, Boilerless controls, electric; allowing these units to be tailored to meet many applications..

Environmentally Friendly

RetroAire's Water Source Console units use R-410A, a hydrofluorocarbon that does not contribute to ozone depletion, as it does not contain Bromine or Chlorine like many older refrigerants; and is therefore, not being phased out under the Montreal Protocol-EPA.

All Water Source Console units meet the ASHRAE 90.1-2010 Efficiency Standards, with cooling efficiencies as high as 11.2 EER and heating efficiencies as high as 4.2 COP. All units are rated in accordance with ISO 13256-1, and comply with all DOE-mandated efficiencies.

Low sound levels are inherent with water source heat pumps since compressors are mounted in their own compartment, and there is no outdoor noise intrusion or an outdoor fan motor.

Easy Start-up and Reliable Operation

Each unit is factory tested to ensure a reliable start-up. Factory-installed controls help to provide years of dependable service. The unit control features high pressure switch and water-loop freeze protection, lockouts. When the condition is corrected the lockouts can easily be reset by cycling the power off, then on.



CWH Cabinet & Sub Base Option

Benefits for Owners

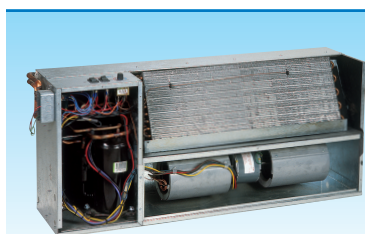
- Industry standard R-410A, "green" refrigerant
- High Efficiency units save on utility bills
- Quiet, reliable operation
- ETL-US/ETL-Canada & DOE Listed

Benefits for Contractors

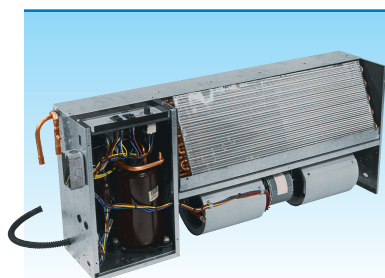
- Easy to install, and minimally invasive, as they do not require an opening in the exterior wall
- Equipment designed to be a drop-in replacement for existing OEM units
- Multiple piping connection and location options allow for easy connection

Benefits for Specifying Engineers

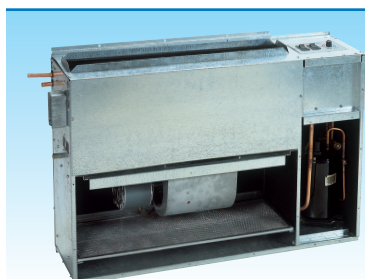
- Wide capacity range to meet most applications
- Multiple options to tailor the unit to many applications
- 24 Vac control option allows for easy adaptation to existing thermostats
- 208-230V/1/60 standard, also available in 115V & 265V



CMH	COOLING MODE		HEAT PUMP MODE		AUXILIARY HEAT			
	Capacity Btuh (kW)	EER	Capacity Btuh (kW)	COP	Electric Heat (kW @ 230 V)			
					2	3	4	5
08	10,000 (2.9)	11.2	11,000 (3.2)	4.2	X	X	X	X
12	12,000 (3.5)	11.2	13,600 (4.0)	4.2	N/A	N/A	N/A	N/A



CWH	COOLING MODE		HEAT PUMP MODE		AUXILIARY HEAT			
	Capacity Btuh (kW)	EER	Capacity Btuh (kW)	COP	Electric Heat (kW @ 230 V)			
					2	3	4	5
10	10,000 (2.9)	11.2	11,000 (3.2)	4.2	X	X	X	X
13	12,000 (3.5)	11.2	13,600 (4.0)	4.2	N/A	N/A	N/A	N/A



WMH	COOLING MODE		HEAT PUMP MODE		AUXILIARY HEAT			
	Capacity Btuh (kW)	EER	Capacity Btuh (kW)	COP	Electric Heat (kW @ 230 V)			
					2	3	4	5
09	10,000 (2.9)	11.2	11,000 (3.2)	4.2	X	X	N/A	N/A
12	12,000 (3.5)	11.2	13,600 (4.0)	4.2	N/A	N/A	N/A	N/A

Contact your local RetroAire Representative or call RetroAire for more details. Specifications subject to change without notice.



ECR International, Inc.
2201 Dwyer Avenue, Utica, NY 13501
Phone: 800.228.9364 • Fax: 800.232.9364
E-mail: info@RetroAire.com • Web: RetroAire.com



RETROAIRE™
The Right Fit for Comfort