



ENERGY EFFICIENCY

RELIABLE
COMFORT

UR
TIL
LATE
YS

QUIET OPERATION

W
C
I
R
E
L
E
S
S

QUIET
OPERATION



EMI ductless does it all!

Introducing the **Maximum Heat Pump Series**
Ductless Mini Split Systems



PN 240013708 REV. [12/01/22]



EMIDUCTLESS.COM



Adding **precisely controlled, energy efficient heating and cooling** just became infinitely more flexible!

EMI's new **Maximum Heat Pump Series** ductless systems provide a highly flexible and efficient method of delivering year-round heating and cooling for maximum comfort.

The ductless split system's indoor/outdoor design makes them an ideal fit for residential and commercial spaces where a ducted solution is not practical. Single- and multi-zone systems are available to meet a wide range of year-round heating and cooling solutions.



High Wall Air Handler

Condensing Unit (Exterior)

Ceiling Cassette Air Handler

Maximum Heat Pump Series features at a glance

- Ductless systems use our sleek wall- or ceiling-mounted indoor air handlers, with a single- or multi-zone outdoor condenser to deliver precise temperature control of one or more rooms.
- Advanced heat pump variable speed technology provides year-round cooling and heating solutions in extreme weather conditions.
- Maximum energy efficiency ratings qualify for utility rebates. ENERGY STAR® Certified.
- Auto Restart - if system shuts down due to power failure, system will restart with previous function settings when power is restored.
- Limited Warranty:
10 years compressor, 5 years parts.

Benefits of EMI's Maximum Heat Pump Series **single-zone** and **multi-zone ductless systems**

With EMI's *Maximum Heat Pump Series*, consistent temperature control has never been so easy, quiet, energy-efficient, or flexible!



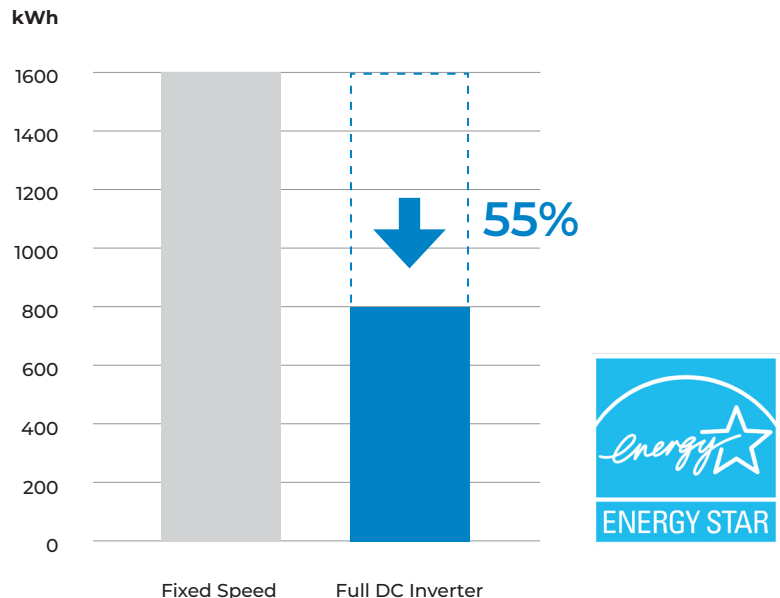
An **easy** fit for **tough** spaces

Whether you need climate control for a single room, a group of rooms, or an entire home – the *Maximum Heat Pump Series* split solution connects a choice of one or more sleek and space-saving air-handling units to a single or

multiple outdoor unit without bulky ductwork. This literally makes the series a great fit in a wide range of applications, especially retrofits, multi-unit housing, even historic structures.

Energy efficiency, **zero emissions**, and rebates!

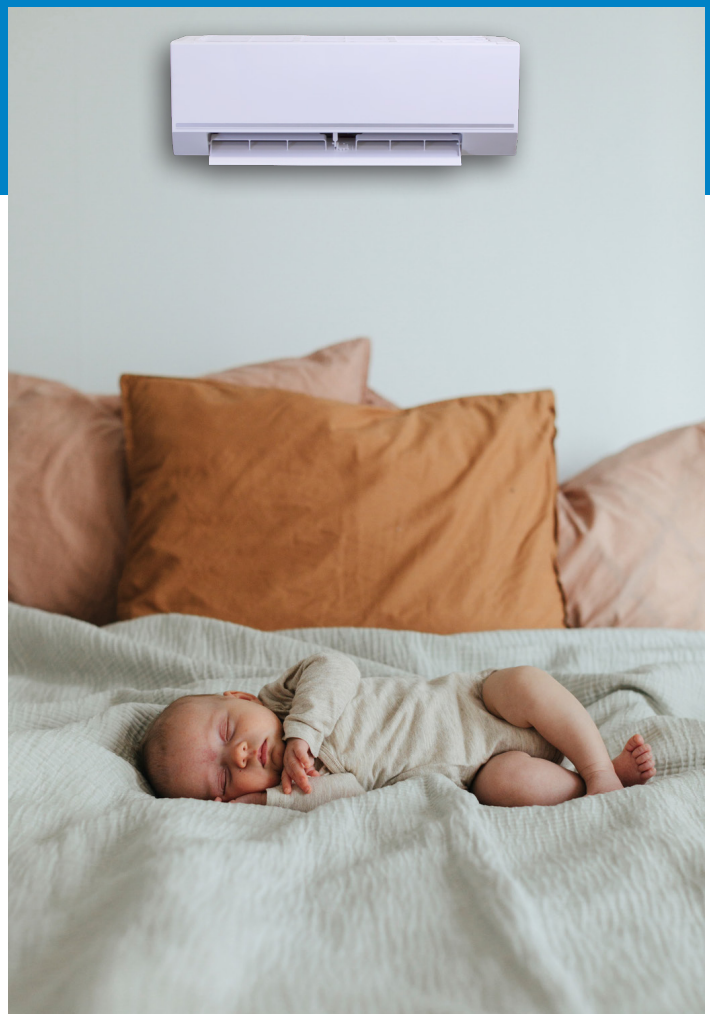
To help benefit from utility or municipal rebates and minimize impact on the environment - the *Maximum Heat Pump Series* features a high-efficiency twin-rotor, variable speed compressor which is more efficient than traditional fixed speed units and achieves ENERGY STAR® certification. But that's not all:



- **Turbo Mode** – rapid and efficient heating of a particular room or space.
- **Advanced, Full DC inverter technology** – reduces energy use by 55% compared to fixed-speed air conditioners.
- **One multi-zone outdoor unit can service multiple indoor units, providing a zoned solution which further reduces energy consumption.**

Reliable, **quiet** operation

The *Maximum Heat Pump Series* not only runs efficiently, it runs without worries. All-weather resilience is aided by a heated base pan that prevents ice buildup – while a stainless-steel crankcase heater keeps compressor oil warm at all times. The system's advanced compressor design reduces vibration and, thus, strain on components. And when ambient temperature is lower at night, the system automatically adjusts the compressor's audible output to as low as 43.9 dB (for comparison, a human conversation measures approximately 60dB!)





A **choice** of air-handling units to match any décor or space

If your goal is clean aesthetics, space-savings, or both – EMI's ductless solution offers you a range of air-handling units.

High wall

Perfect for a variety of rooms and can easily be mounted on a wall surface.

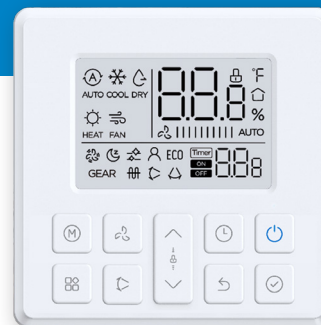
Ceiling Cassette

An excellent option when four-way directional air flow is desired, this unit recesses into the ceiling.

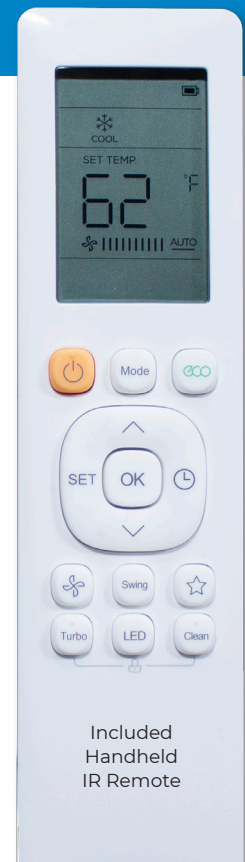
Convenient *control*

Room consistently too hot or too cold? Experiencing hot or cool spots? EMI's *Maximum Heat Pump Series* systems deliver precise, consistent temperature control for optimum comfort.

- Choice of modes – Choose between Sleep Mode for maximum comfort while sleeping, Timed modes for variety, or Turbo Mode to quickly cool or heat a space.
- Choice of controls – Convenience is yours, whether you opt for the included wireless remote, utilize the “Follow Me” feature (detects room temperature from the remote control and adjusts for your personal comfort wherever you are in the room) or the optional wired wall control.



Wired Wall Thermostat



Included Handheld IR Remote



Zero emissions

The *Maximum Heat Pump Series* is ECO friendly and a great alternative to other carbon-based heating solutions.

“Golden Fin” anti-corrosive coating on the heat exchanger prevents bacteria from breeding in the system and withstands corrosive elements for longer lasting performance.

In addition to the personal comfort provided by the *Maximum Heat Pump Series*, users of the system can take comfort in the fact that the system includes filtering, leak-detection, and operating features that simultaneously improve indoor air quality *and* mitigate the system’s impact on the outdoor environment.

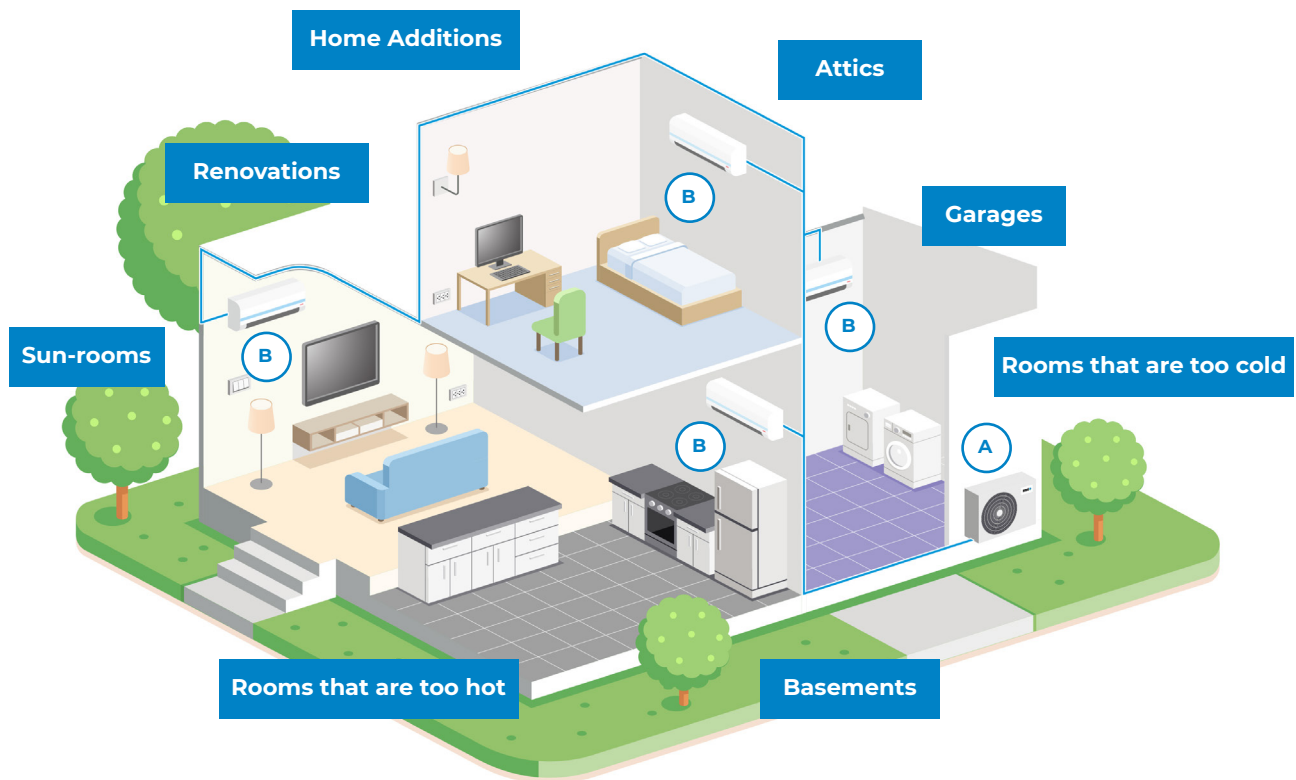
Easy installation, *minimal* maintenance

The Maximum Heat Pump Series system is easily installed and configured by a qualified contractor. Once installed, maintenance is kept to a minimum. Simply clean the easy-access filter in the system’s air-handling units (no more dusty ductwork!) and schedule an occasional diagnostics and maintenance of your outside condenser unit with your contractor. Internal diagnostics and refrigerant leakage detection quickly identifies any issues and reduces service time.



What is a **ductless HVAC system**?

Ductless or “mini-split” systems provide heating and cooling comfort to one or more living spaces (or “zones”) without the use of traditional, oftentimes bulky and unsightly ductwork. Instead, a single heating/cooling condensing unit **(A)** – which is typically located on the *exterior* of a structure – enables the system to achieve the desired room temperature via a closed, refrigerant loop to one or more strategically located air-handling units **(B)** located in a building’s *interior*. Compact, sleek, and designed to quietly and efficiently circulate the air for optimum comfort, these indoor units constantly monitor air temperature, self-adjust system performance for optimal energy efficiency.



*Also perfect for light commercial spaces such as:
data centers/server rooms, meeting/conference rooms, gyms, and more...*

Maximum Heat Pump Series Combinations

Model #	2 Zone	3 Zone	4 Zone
MHMZ-218DA MHWAL 6/9/12 MHCASH 9/12	6 k + 6 k		
	6 k + 9 k		
	6 k + 12 k		
	9 k + 9 k		
	9 k + 12 k		
	12 k + 12 k		
MHMZ-327DA MHWAL 6/9/12/18/24 MHCASH 9/12/18	6 k + 12 k	6 k + 6 k + 6 k	
	6 k + 18 k	6 k + 6 k + 9 k	
	9 k + 9 k	6 k + 6 k + 12 k	
	9 k + 12 k	6 k + 6 k + 18 k	
	9 k + 18 k	6 k + 6 k + 24 k	
	9 k + 24 k	6 k + 9 k + 9 k	
	12 k + 12 k	6 k + 9 k + 12 k	
	12 k + 18 k	6 k + 9 k + 18 k	
	12 k + 24 k	6 k + 12 k + 12 k	
	18 k + 18 k	9 k + 9 k + 9 k	
		9 k + 9 k + 12 k	
		9 k + 9 k + 18 k	
		9 k + 12 k + 12 k	
		12 k + 12 k + 12 k	
MHMZ-436DA MHWAL 6/9/12/18/24 MHCASH 9/12/18/24	6 k + 18 k	6 k + 6 k + 12 k	6 k + 6 k + 6 k + 6 k
	6 k + 24 k	6 k + 6 k + 18 k	6 k + 6 k + 6 k + 9 k
	9 k + 18 k	6 k + 6 k + 24 k	6 k + 6 k + 6 k + 12 k
	9 k + 24 k	6 k + 9 k + 12 k	6 k + 6 k + 6 k + 18 k
	12 k + 12 k	6 k + 9 k + 18 k	6 k + 6 k + 6 k + 24 k
	12 k + 18 k	6 k + 9 k + 24 k	6 k + 6 k + 9 k + 9 k
	12 k + 24 k	6 k + 12 k + 12 k	6 k + 6 k + 9 k + 12 k
	18 k + 18 k	6 k + 12 k + 18 k	6 k + 6 k + 9 k + 18 k
	18 k + 24 k	6 k + 12 k + 24 k	6 k + 6 k + 9 k + 24 k
	24 k + 24 k	6 k + 18 k + 18 k	6 k + 6 k + 12 k + 12 k
		6 k + 18 k + 24 k	6 k + 6 k + 12 k + 18 k
		9 k + 9 k + 9 k	6 k + 6 k + 12 k + 24 k
		9 k + 9 k + 12 k	6 k + 9 k + 9 k + 9 k
		9 k + 9 k + 18 k	6 k + 9 k + 9 k + 12 k
		9 k + 9 k + 24 k	6 k + 9 k + 9 k + 18 k
		9 k + 12 k + 12 k	6 k + 9 k + 9 k + 24 k
		9 k + 12 k + 18 k	6 k + 9 k + 12 k + 12 k
		9 k + 12 k + 24 k	6 k + 9 k + 12 k + 18 k
		9 k + 18 k + 18 k	6 k + 12 k + 12 k + 12 k
		12 k + 12 k + 12 k	6 k + 12 k + 12 k + 18 k
		12 k + 12 k + 18 k	9 k + 9 k + 9 k + 9 k
		12 k + 12 k + 24 k	9 k + 9 k + 9 k + 12 k
		12 k + 18 k + 18 k	9 k + 9 k + 9 k + 18 k
			9 k + 9 k + 12 k + 12 k
			9 k + 9 k + 12 k + 18 k
			9 k + 9 k + 12 k + 24 k
			9 k + 9 k + 12 k + 12 k
			9 k + 9 k + 12 k + 18 k
			9 k + 12 k + 12 k + 12 k
			12 k + 12 k + 12 k + 12 k

Model #	2 Zone	3 Zone	4 Zone	5 Zone
MHMZ-548DA MHWAL 6/9/12/18/24 MHCASH 9/12/18	9 k + 24 k	6 k + 6 k + 24 k	6 k + 6 k + 6 k + 18 k	6 k + 6 k + 6 k + 6 k + 9 k
	12 k + 24 k	6 k + 9 k + 24 k	6 k + 6 k + 6 k + 24 k	6 k + 6 k + 6 k + 6 k + 12 k
	18 k + 18 k	6 k + 12 k + 18 k	6 k + 6 k + 9 k + 18 k	6 k + 6 k + 6 k + 6 k + 18 k
	18 k + 24 k	6 k + 12 k + 24 k	6 k + 6 k + 9 k + 24 k	6 k + 6 k + 6 k + 6 k + 24 k
		6 k + 18 k + 18 k	6 k + 6 k + 12 k + 12 k	6 k + 6 k + 6 k + 9 k + 9 k
		6 k + 18 k + 24 k	6 k + 6 k + 12 k + 18 k	6 k + 6 k + 6 k + 9 k + 12 k
		6 k + 24 k + 24 k	6 k + 6 k + 12 k + 24 k	6 k + 6 k + 6 k + 9 k + 18 k
		9 k + 9 k + 18 k	6 k + 6 k + 18 k + 18 k	6 k + 6 k + 6 k + 9 k + 24 k
		9 k + 9 k + 24 k	6 k + 6 k + 18 k + 24 k	6 k + 6 k + 6 k + 12 k + 12 k
		9 k + 12 k + 12 k	6 k + 6 k + 24 k + 24 k	6 k + 6 k + 6 k + 12 k + 18 k
		9 k + 12 k + 18 k	6 k + 9 k + 9 k + 12 k	6 k + 6 k + 6 k + 12 k + 24 k
		9 k + 12 k + 24 k	6 k + 9 k + 9 k + 18 k	6 k + 6 k + 6 k + 18 k + 18 k
		9 k + 18 k + 18 k	6 k + 9 k + 9 k + 24 k	6 k + 6 k + 6 k + 18 k + 24 k
		9 k + 18 k + 24 k	6 k + 9 k + 12 k + 12 k	6 k + 6 k + 9 k + 9 k + 9 k
		9 k + 24 k + 24 k	6 k + 9 k + 12 k + 18 k	6 k + 6 k + 9 k + 9 k + 12 k
		12 k + 12 k + 12 k	6 k + 9 k + 12 k + 24 k	6 k + 6 k + 9 k + 9 k + 18 k
		12 k + 12 k + 18 k	6 k + 9 k + 18 k + 18 k	6 k + 6 k + 9 k + 9 k + 24 k
		12 k + 12 k + 24 k	6 k + 9 k + 18 k + 24 k	6 k + 6 k + 9 k + 12 k + 12 k
		12 k + 18 k + 18 k	6 k + 12 k + 12 k + 12 k	6 k + 6 k + 9 k + 12 k + 18 k
		12 k + 18 k + 24 k	6 k + 12 k + 12 k + 18 k	6 k + 6 k + 9 k + 12 k + 24 k
		12 k + 24 k + 24 k	6 k + 12 k + 12 k + 24 k	6 k + 6 k + 9 k + 18 k + 18 k
		18 k + 18 k + 18 k	6 k + 12 k + 18 k + 18 k	6 k + 6 k + 9 k + 18 k + 24 k
		18 k + 18 k + 24 k	6 k + 12 k + 18 k + 24 k	6 k + 6 k + 12 k + 12 k + 12 k
			9 k + 9 k + 9 k + 9 k	6 k + 6 k + 12 k + 12 k + 18 k
			9 k + 9 k + 9 k + 12 k	6 k + 6 k + 12 k + 12 k + 24 k
			9 k + 9 k + 9 k + 18 k	6 k + 6 k + 12 k + 18 k + 18 k
			9 k + 9 k + 9 k + 24 k	6 k + 9 k + 9 k + 9 k + 9 k
			9 k + 9 k + 12 k + 12 k	6 k + 9 k + 9 k + 9 k + 12 k
			9 k + 9 k + 12 k + 18 k	6 k + 9 k + 9 k + 9 k + 18 k
			9 k + 9 k + 12 k + 24 k	6 k + 9 k + 9 k + 9 k + 24 k
			9 k + 9 k + 18 k + 18 k	6 k + 9 k + 9 k + 12 k + 12 k
			9 k + 9 k + 18 k + 24 k	6 k + 9 k + 9 k + 12 k + 18 k
			9 k + 12 k + 12 k + 12 k	6 k + 9 k + 9 k + 12 k + 24 k
			9 k + 12 k + 12 k + 18 k	6 k + 9 k + 9 k + 18 k + 18 k
			9 k + 12 k + 12 k + 24 k	6 k + 9 k + 12 k + 12 k + 12 k
			9 k + 12 k + 18 k + 18 k	6 k + 9 k + 12 k + 12 k + 18 k
			9 k + 12 k + 18 k + 24 k	6 k + 9 k + 12 k + 12 k + 24 k
			12 k + 12 k + 12 k + 12 k	6 k + 12 k + 12 k + 12 k + 12 k
			12 k + 12 k + 12 k + 18 k	6 k + 12 k + 12 k + 12 k + 18 k
			12 k + 12 k + 12 k + 24 k	9 k + 9 k + 9 k + 9 k + 9 k
			12 k + 12 k + 18 k + 18 k	9 k + 9 k + 9 k + 9 k + 12 k
				9 k + 9 k + 9 k + 9 k + 18 k
				9 k + 9 k + 9 k + 9 k + 24 k
				9 k + 9 k + 9 k + 12 k + 12 k
				9 k + 9 k + 9 k + 12 k + 18 k
				9 k + 9 k + 9 k + 12 k + 24 k
				9 k + 9 k + 12 k + 12 k + 12 k
				9 k + 9 k + 12 k + 12 k + 18 k
				9 k + 12 k + 12 k + 12 k + 12 k
				12 k + 12 k + 12 k + 12 k + 12 k

Note: If total indoor units load exceeds nominal capacity of outdoor unit, the practical output capacity of every indoor unit will be correspondingly attenuated. This situation is very evident during heating mode.

Maximum Heat Pump Series

Single-Zone System with Wall Air Handler

Outdoor Condensing Unit Model Indoor Air Handler Model			MHSZ106DA MHWAL06DA	MHSZ109DA MHWAL09DA
Power Supply		V,Ph,Hz	208/230, 1, 60	208/230, 1, 60
Cooling	Capacity	Btu/h	6000	9000
	EER	Btu/w	15.8	16.2
	SEER	Btu/w	26.5	28.1
Rated Heating	Capacity at 47°F (8.3°C)	Btu/w	7000	13500
	COP	W/W	3.92	3.81
	HSPF	Btu/w	14	13
Heating at 17°F (-8°C)	Rated Capacity	Btu/h	8500	9500
Heating at 0°F (-17°C)	Rated Capacity	Btu/h	7800	9500
Indoor Air Flow (Hi/Mi/Lo)		cfm	320 / 220 / 170	340 / 230 / 180
Indoor Noise Level (Hi/Mi/Lo)		dB(A)	36 / 32 / 23	38 / 34 / 24
Indoor Unit	Dimensions (WxDxH)	inches	33.7 x 9.1 x 11.7	33.7 x 9.1 x 11.7
		mm	855 x 231 x 297	855 x 231 x 297
	Gross Weight	Lbs/Kg	29 / 13	29 / 13
Outdoor Unit	Dimensions (WxDxH)	inches	30.1 x 11.9 x 21.9	31.7 x 13 x 21.9
		mm	765 x 303 x 555	805 x 330 x 554
	Gross Weight	Lbs/Kg	69 / 31	80 / 36
Refrigerant type 410A		oz	38.1	41.62
Design Pressure		psig	550 / 340	550 / 340
Refrigerant Precharge (total pipe length)		ft / m	25.0 / 7.6	25.0 / 7.6
Additional charge for each ft		oz	0.16	0.16
Refrigerant Piping	Liquid side/Gas side Flare Connections	inch	1/4 / 3/8	1/4 / 3/8
		mm	6.35 / 9.52	6.35 / 9.52
	Max. pipe length	ft / m	82 / 25	82 / 25
	Max. difference in height	ft / m	32.8 / 10	32.8 / 10
MINIMUM CIRCUIT AMPACITY		A	13	15
MAX TIME DELAY FUSE/HARC BREAKER		A	15	15
Indoor Temperature Range	Thermostat Setting Range Indoor (Cooling/Heating)	°C	16~32 / 0~30	16~32 / 0~27
		°F	60~90 / 32~86	60~90 / 32~81
Outdoor Operating Temperature Range	Outdoor (Cooling/Heating)	°C	-30~50 / -30~30	-30~50 / -30~30
		°F	-22~122 / -22~86	-22~122 / -22~86

Specifications subject to change without notice.

Specifications and Performance

MHSZ112DA MHWAL12DA	MHSZ118DA MHWAL18DA	MHSZ124DA MHWAL24DA
208/230, 1, 60	208/230, 1, 60	208/230, 1, 60
12000	18000	24000
14	12.5	13
25.5	21.5	21.5
14000	19500	28000
3.88	3.10	3.40
13	13	12
10000	15000	21200
10500	17500	23500
340 / 230 / 180	530 / 370 / 310	610 / 410 / 320
38 / 34 / 24	46 / 42 / 24	46 / 39 / 34
33.7 x 9.1 x 11.7	40.3 x 9.7 x 12.6	47.1 x 11 x 14.6
855 x 231 x 297	1023 x 245 x 319	1196 x 279 x 370
29 / 13	36 / 16	55 / 25
31.7 x 13 x 21.9	35 x 13.5 x 26.5	37.2 x 16.1 x 31.9
805 x 330 x 554	890 x 342 x 673	946 x 410 x 810
79 / 36	108 / 49	144 / 66
41.62	65.2	91.7
550 / 340	550 / 340	550 / 340
25.0 / 7.6	25.0 / 7.6	25.0 / 7.6
0.16	0.16	0.32
1/4 / 1/2	1/4 / 1/2	3/8 / 5/8
6.35 / 12.7	6.35 / 12.7	9.52 / 15.9
82 / 25	98 / 30	164 / 50
32.8 / 10	66 / 20	82 / 25
15	16	25
15	25	35
16~32 / 0~27	17~32 / 0~27	17~32 / 0~27
60~90 / 32~81	63~90 / 32~86	63~90 / 32~86
-30~50 / -30~30	-30~50 / -30~30	-30~50 / -30~30
-22~122 / -22~86	-22~122 / -22~86	-22~122 / -22~86

Specifications subject to change without notice.

Maximum Heat Pump Series

Single-Zone System with Ceiling Cassette

Outdoor Condensing Unit Model Indoor Air Handler Model			MHSZ109DA MHCAS09DA
Power Supply		V,Ph,Hz	208/230, 1, 60
Cooling	Capacity	Btu/h	9000
	EER	Btu/w	13
	SEER	Btu/w	20.5
Rated Heating	Capacity at 47°F (8.3°C)	Btu/h	10000
	COP	W/W	2.93
	HSPF	Btu/w	10.8
Heating at 17°F (-8°C)	Rated Capacity	Btu/h	9000
Heating at 0°F (-17°C)	Rated Capacity	Btu/h	9800
Indoor Air Flow (Hi/Mi/Lo)		cfm	350 / 300 / 270
Indoor Noise Level (Hi/Mi/Lo)		dB(A)	40 / 36 / 33
Indoor Unit	Dimensions (WxDxH)	inches	22.4 x 22.4 x 10.2
		mm	570 x 570 x 260
	Gross Weight	Lbs/Kg	38 / 17
Outdoor Unit	Dimensions (WxDxH)	inches	31.7 x 13 x 21.8
		mm	805 x 330 x 554
	Gross Weight	Lbs/Kg	80 / 36
Refrigerant type 410A		oz	41.62
Design Pressure		psig	550 / 340
Refrigerant Precharge (total pipe length)		ft / m	25.0 / 7.6
Additional charge for each ft		oz	0.16
Refrigerant Piping	Liquid side/Gas side Flare Connections	inch	1/4 / 3/8
		mm	6.35 / 9.52
	Max. pipe length	ft / m	82 / 25.0
	Max. difference in height	ft / m	32.8 / 10
MINIMUM CIRCUIT AMPACITY		A	15
MAX TIME DELAY FUSE/HARC BREAKER		A	15
Indoor Temperature Range	Thermostat Range Indoor (Cooling/Heating)	°C	16~32 / 0~30
		°F	60~90 / 32~86
Outdoor Operating Temperature Range	Outdoor (Cooling/Heating)	°C	-30~50 / -30~30
		°F	-22~122 / -22~86

Specifications subject to change without notice.

Specifications and Performance

MHSZ112DA MHCAS12DA	MHSZ118DA MHCAS18DA	MHSZ124DA MHCAS24DA
208/230, 1, 60	208/230, 1, 60	208/230, 1, 60
12000	17000	24000
12.7	12.5	11
21.5	20.0	20.2
12000	18000	25000
3.22	2.88	3.50
10.6	10.3	11.6
9900	15600	21000
11000	16000	23000
380 / 300 / 260	560 / 490 / 440	710 / 640 / 550
41 / 36 / 32	44 / 39 / 36	48 / 46 / 43
22.4 x 22.4 x 10.2	22.4 x 22.4 x 10.2	32.7 x 32.7 x 8.1
570 x 570 x 260	570 x 570 x 260	830 x 830 x 205
41 / 19	47 / 21	55 / 25
31.7 x 13 x 21.8	35 x 13.5 x 26.5	37.2 x 16.1 x 31.9
805 x 330 x 554	890 x 342 x 673	946 x 410 x 810
79 / 36	108 / 49	144 / 66
41.62	65.2	91.7
550 / 340	550 / 340	550 / 340
25.0 / 7.6	25.0 / 7.6	25.0 / 7.6
0.16	0.16	.32
1/4 / 1/2	1/4 / 1/2	3/8 / 5/8
6.35 / 12.7	6.3 / 12.7	9.52 / 15.9
82 / 25	98 / 30	164 / 50
32.8 / 10	66 / 20	82 / 25
15	16	25
15	25	35
16~32 / 0~27	16~32 / 0~30	16~32 / 0~30
60~90 / 32~86	60~90 / 32~86	60~90 / 32~86
-30~50 / -30~30	-30~50 / -30~30	-30~50 / -30~30
-22~122 / -22~86	-22~122 / -22~86	-22~122 / -22~86

Specifications subject to change without notice.

Maximum Heat Pump Series - Multi-Zone System Outdoor Units

Specifications and Performance

Outdoor Condensing Unit Model			MHMZ218DA	MHMZ327DA	MHMZ436DA	MHMZ548DA
Power Supply		V,Ph,Hz	208/230, 1, 60	208/230, 1, 60	208/230, 1, 60	208/230, 1, 60
Cooling	Capacity	Btu/h	19000	28000	36000	48000
	EER	Btu	12.5	12.5	13.6	11.6
	SEER	Btu	22	22.5	21.8	21.5
Rated Heating	Capacity at 47°F (8.3°C)	Btu/h	20000	28000	36500	49000
	COP	W/W	3.40	3.66	3.85	3.59
	HSPF	Btu/w	10.2	11.3	11.0	11.0
Heating at 17°F (-8°C)	Rated Capacity	Btu/h	12000	17500	23200	45000
Heating at 5°F (-15°C)	Rated Capacity	Btu/h	19000	24000	36000	48000
Operating Range Ambient Temp.	Cooling	°C	-30~50	-30~50	-30~50	-30~50
		°F	-22~122	-22~122	-22~122	-22~122
	Heating	°C	-30~30	-30~30	-30~30	-30~30
		°F	-22~86	-22~86	-22~86	-22~86
Minimum Circuit Ampacity		A	20	25	40	40
Max Time Delay Fuse/Harc Breaker		A	25	40	60	60
Outdoor Air Flow		cfm	2100	2100	4500	4500
Outdoor Noise Level		dB(A)	61	63	62	65
Outdoor Unit	Dimensions (WxDxH)	inches	37.2 x 16.1 x 31.9	37.2 x 16.1 x 31.9	37.5 x 16.3 x 52.5	37.5 x 16.3 x 52.5
		mm	946 x 410 x 810	946 x 410 x 810	952 x 415 x 1333	952 x 415 x 1333
	Gross Weight	Lbs/Kg	149 / 68	180 / 82	254 / 115	270 / 122
Refrigerant type 410A		oz	91.7	134.04	162.0	162.0
Refrigerant Precharge (total pipe length)		ft / m	49 / 15	74 / 22.5	98 / 30	123 / 37.5
Additional charge for each ft (Inch)	1/4 (6.35mm) liquid pipe	oz	0.16	0.16	0.16	0.16
	3/8 (9.52mm) liquid pipe	oz	0.32	0.32	0.32	0.32
Design Pressure		psig	550 / 340	550 / 340	550 / 340	550 / 340
Refrigerant Piping	Liquid side/Gas side Flare Connections	inch	(2) 1/4 / (2) 3/8	(3) 1/4 / (3) 3/8	(4) 1/4 / (3) 3/8, (1) 1/2	(5) 1/4 / (3) 3/8, (2) 1/2
		mm	(2) 6.35 / (2) 9.52	(3) 6.35 / (3) 9.52	(4) 6.35 / (3) 9.52, (1) 12.7	(5) 6.35 / (3) 9.52, (2) 12.7
	Max. length for all rooms	m	40	60	80	80
		ft	131	197	262	262
	Max. length for one indoor unit	m	25	30	35	35
		ft	82	98	115	115
	Max. height difference between OD higher than indoor	m	15	15	15	15
		ft	49	49	49	49
	Max. height difference between OD lower than indoor	m	10	10	10	10
		ft	33	33	33	33

Specifications subject to change without notice.

Maximum Heat Pump Series - Multi-Zone System Wall Air Handler Specifications and Performance

Indoor Wall Air Handler Model			MHWAL06DA	MHWAL09DA	MHWAL12DA	MHWAL18DA	MHWAL24DA
Power Supply		V,Ph,Hz	208/230, 1, 60	208/230, 1, 60	208/230, 1, 60	208/230, 1, 60	208/230, 1, 60
	RLA	A	0.81	0.41	0.41	0.44	0.55
Indoor Air Flow (Hi/Mi/Lo)		cfm	320 / 220 / 170	340 / 230 / 180	340 / 230 / 180	530 / 370 / 310	610 / 410 / 320
Indoor Noise Level (Hi/Mi/Lo)		dB(A)	36 / 32 / 23	38 / 34 / 24	38 / 34 / 24	46 / 42 / 24	46 / 39 / 34
Wall Air Handler	Dimensions (WxDxH)	inches	33.7 x 9.1 x 11.7	33.7 x 9.1 x 11.7	33.7 x 9.1 x 11.7	40.3 x 9.7 x 12.6	47.1 x 11 x 14.6
		mm	855 x 231 x 297	855 x 231 x 297	855 x 231 x 297	1023 x 245 x 319	1196 x 279 x 370
	Gross Weight	Lbs/Kg	29 / 13	29 / 13	29 / 13	36 / 16	55 / 25
Refrigerant Piping	Liquid side/ Gas side Flare Connections	inches	1/4 / 3/8	1/4 / 3/8	1/4 / 1/2	1/4 / 1/2	3/8 / 5/8
		mm	6.35 / 9.52	6.35 / 9.52	6.35 / 12.7	6.35 / 12.7	9.52 / 15.9
Thermostat Setting Range	Indoor (Cooling/ Heating)	°C	16~32 / 0~30	16~32 / 0~27	16~32 / 0~27	16~32 / 0~27	16~32 / 0~27
		°F	60~90 / 32~86	60~90 / 32~86	60~90 / 32~86	60~90 / 32~86	60~90 / 32~86

Maximum Heat Pump Series - Multi-Zone System Ceiling Cassette Specifications and Performance

Indoor Ceiling Cassette Model			MHCAS09DA	MHCAS12DA	MHCAS18DA	MHCAS24DA
Power Supply		V,Ph,Hz	208/230, 1, 60	208/230, 1, 60	208/230, 1, 60	208/230, 1, 60
	RLA	A	0.81	0.92	1.65	1.0
Indoor Air Flow (Hi/Mi/Lo)		cfm	360 / 310 / 270	380 / 310 / 260	360 / 490 / 440	710 / 640 / 550
Indoor Noise Level (Hi/Mi/Lo)		dB(A)	40 / 36 / 33	41 / 36 / 32	44 / 39 / 36	48 / 46 / 43
Ceiling Cassette	Dimensions (WxDxH)	inches	22.4 x 22.4 x 10.2	22.4 x 22.4 x 10.2	22.4 x 22.4 x 10.2	32.7 x 32.7 x 8.1
		mm	570 x 570 x 260	570 x 570 x 260	570 x 570 x 260	830 x 830 x 205
	Gross Weight	Lbs/Kg	38 / 17	41 / 19	47 / 21	55 / 25
Refrigerant Piping	Liquid side/ Gas side Flare Connections	inches	1/4 / 3/8	1/4 / 1/2	1/4 / 1/2	3/8 / 5/8
		mm	6.35 / 9.52	6.35 / 12.7	6.35 / 12.7	9.52 / 15.9
Thermostat Setting Range	Indoor (Cooling/ Heating)	°C	17~32 / 0~30	17~32 / 0~30	17~32 / 0~30	17~32 / 0~30
		°F	62~90 / 32~86	62~90 / 32~86	62~90 / 32~86	62~90 / 32~86
Facia Panel			Must be ordered with cassette unit, packaged and sold separately.			
Facia Part Number			240013566	240013566	240013566	240013567

Specifications subject to change without notice.



ECR international



GRANBY
INDUSTRIES

At ECR International and Granby Industries, we are in the business of keeping you comfortable. Our partnership has made us the leading North American manufacturer of residential and light commercial heating and cooling equipment. Our commitment to research, development and product quality ensure that our customers receive cost effective, efficient products that meet current regulatory and environmental standards.

ECRINTERNATIONAL.COM



LEARN MORE AT EMIDUCTLESS.COM



ECR international

2201 Dwyer Avenue, Utica, NY 13501
Tel. 315 797 1310
www.ecrinternational.com

All specifications subject to change without notice.
©2022 ECR International, Inc.
PN 240013708 REV. [12/01/2022]